

BOX SCORE: *** FINAL ***

Date: 03-23-88 Site: State Tourney, Frankfort Attendance: 4,350

Team: Pulaski County

NO.	NAME	TOTAL FG		3-POINT		FT	FTA	REB			PF	TP	A	TO	BLK	S	MIN
		FG	FGA	FG	FGA			O	D	T							
25	Morris, Veronica	1	3	0	0	0	0	0	3	3	4	2	2	2	0	2	29
31	Waddle, Dana	2	5	0	0	0	0	2	2	4	1	4	0	1	0	0	32
35	Seefeldt, Tari	3	10	0	0	0	1	2	2	4	3	6	0	0	0	0	28
04	Smith, Amber	3	5	1	1	1	4	1	3	4	2	8	3	5	0	1	32
12	Cox, Angie	5	16	0	3	7	8	2	3	5	2	17	0	3	0	3	32
33	Peckinpaugh, C.	0	0	0	0	2	2	0	1	1	1	2	0	0	0	0	3
24	Tackett, Christy	0	0	0	0	0	0	0	1	1	0	0	0	0	0	0	2
15	Withers, Jana	0	1	0	1	0	0	0	1	1	0	0	0	1	0	1	2
TEAM		14 / 40		1 / 5		10	15	7	16	23	13	39	5	12	0	7	160
Percentages:		Game-----		FG		14/ 40	35.0%	3-PT.		1/ 5	20.0%	FT		10/ 15	66.7%		
		Period 1				2/ 6	33.3%			0/ 1	0.0%			2/ 4	50.0%		
		Period 2				4/ 10	40.0%			0/ 0	0.0%			0/ 0	0.0%		
		Period 3				2/ 8	25.0%			0/ 0	0.0%			4/ 4	100.0%		
		Period 4				6/ 16	37.5%			1/ 4	25.0%			4/ 7	57.1%		

Team: Henry Clay

NO.	NAME	TOTAL FG		3-POINT		FT	FTA	REB			PF	TP	A	TO	BLK	S	MIN
		FG	FGA	FG	FGA			O	D	T							
24	Barney, Alicon	2	6	0	0	0	2	3	2	5	0	4	2	2	0	0	24
50	Bright, Demetria	4	15	0	0	1	2	1	5	6	3	9	5	3	2	1	29
40	Walker, Tammy	6	9	0	0	2	3	5	6	11	4	14	0	2	0	0	23
20	Weissmueller, D	2	6	0	1	1	2	0	2	2	0	5	5	3	0	2	32
30	Hughes, Jeanetta	0	2	0	0	0	0	1	2	3	1	0	1	1	0	1	17
12	Smith, Dawn	4	7	0	1	2	2	1	1	2	2	10	0	3	0	1	25
54	Hoter, Angela	0	1	0	0	0	0	0	1	1	3	0	0	0	0	1	9
TEAM		18 / 46		0 / 2		6	11	12	21	33	13	42	13	14	2	6	159
Percentages:		Game-----		FG		18/ 46	39.1%	3-PT.		0/ 2	0.0%	FT		6/ 11	54.5%		
		Period 1				4/ 13	30.8%			0/ 1	0.0%			2/ 2	100.0%		
		Period 2				3/ 10	30.0%			0/ 0	0.0%			1/ 1	100.0%		
		Period 3				5/ 14	42.9%			0/ 1	0.0%			0/ 0	0.0%		
		Period 4				5/ 9	55.6%			0/ 0	0.0%			3/ 8	37.5%		

OFFICIALS: Dan Hatfield, Danny Percell, Alt.-W. Divine

Technical: Walker, Tammy - 1;

SCORE BY PERIODS

Pulaski County	6	8	8	17	=	39
Henry Clay	10	7	12	13	=	42

2nd Half Play by Play (continued)

PAGE : 3

Player	Team	Henry Clay	Time	Score	Pulaski County	Player	Team
			4 1:10		Rebound by Smith, Amber	D-1	Tot-1
			4 0:58		6 ft Lane Turnaround by Seefeldt, Tari missed	3-10	30.0%
D-2	Tot-2	D-3 Tot-32	4 0:57				
		Rebound by Walker, Tammy	4 0:51		Foul on Waddle, Dana	1	7
1-2	50.0%	5-9 55.5%	4 0:50	*41-35			
		Weissmueller, D, 1 & Bonus made 1st missed 2nd	4 0:50		Rebound by Seefeldt, Tari	D-1	Tot-2
			4 0:42		3 pt 22 ft Right Angle Jump shot by Withers, Jana, missed	0-1	00.0%
			4 0:38		Rebound by Cox, Angie	0-1	Tot-1
			4 0:38	41-37*	7 ft Lane Follow by Cox, Angie, made	5-16	31.2%
						13-38	34.2%
						0-4	Tot-21
						14-39	35.8%
			4 0:33				
		REB: 32 A: 13 BLK: 2 TD: 12 PF: 8			REB: 21 A: 5 BLK: 0 TD: 11 PF: 7		
		S: 6 FT: 5-9 55.5% FG: 18-45 40.0%			S: 5 FT: 8-13 61.5% FG: 14-39 35.8%		
			4 0:33		Sub In: Morris, Veronica Out: Seefeldt, Tari		
2-6	33.3%	18-46 39.1%	4 0:33				
		Layup Off Fast Break by Barney, Alicon, missed	4 0:24		Rebound by Withers, Jana	D-1	Tot-1
			4 0:23			D-3	Tot-22
		Sub In: Hughes, Jeanetta Out: Barney, Alicon	4 0:23		Sub In: Seefeldt, Tari Out: Withers, Jana		
			4 0:23				
		REB: 32 A: 13 BLK: 2 TD: 12 PF: 8			REB: 22 A: 5 BLK: 0 TD: 11 PF: 7		
		S: 6 FT: 5-9 55.5% FG: 18-46 39.1%			S: 5 FT: 8-13 61.5% FG: 14-39 35.8%		
			4 0:21		10 ft Left Side Jump shot by Smith, Amber, missed	3-5	60.0%
D-1	Tot-2	D-4 Tot-33	4 0:15			14-40	35.0%
		Rebound by Bright, Demetria	4 0:12		Foul on Cox, Angie	2	8
1-2	50.0%	6-11 54.5%	4 0:12	*42-37			
		Bright, Demetria, 1 & Bonus made 1st missed 2nd	4 0:11		Rebound by Morris, Veronica	D-1	Tot-1
			4 0:05			D-4	Tot-23
3		9	4 0:05	42-39*	Cox, Angie, 2 Free Throws made both	7-8	87.5%
		Foul on Bright, Demetria	4 0:05		Sub In: Withers, Jana Out: Seefeldt, Tari	10-15	66.6%
			4 0:01		Steal by Withers, Jana	1	6
			4 0:01				
3		13	4 0:01		Out-of-Bounds by Withers, Jana	1	12
		Dribbling Error on Weissmueller, D					
			4 0:01				
		REB: 33 A: 13 BLK: 2 TD: 13 PF: 9			REB: 23 A: 5 BLK: 0 TD: 12 PF: 8		
		S: 6 FT: 6-11 54.5% FG: 18-46 39.1%			S: 6 FT: 10-15 66.6% FG: 14-40 35.0%		
			4 0:01		Steal by Cox, Angie	2	7
3		14	4 0:01				
		Bad Pass by Smith, Dawn					

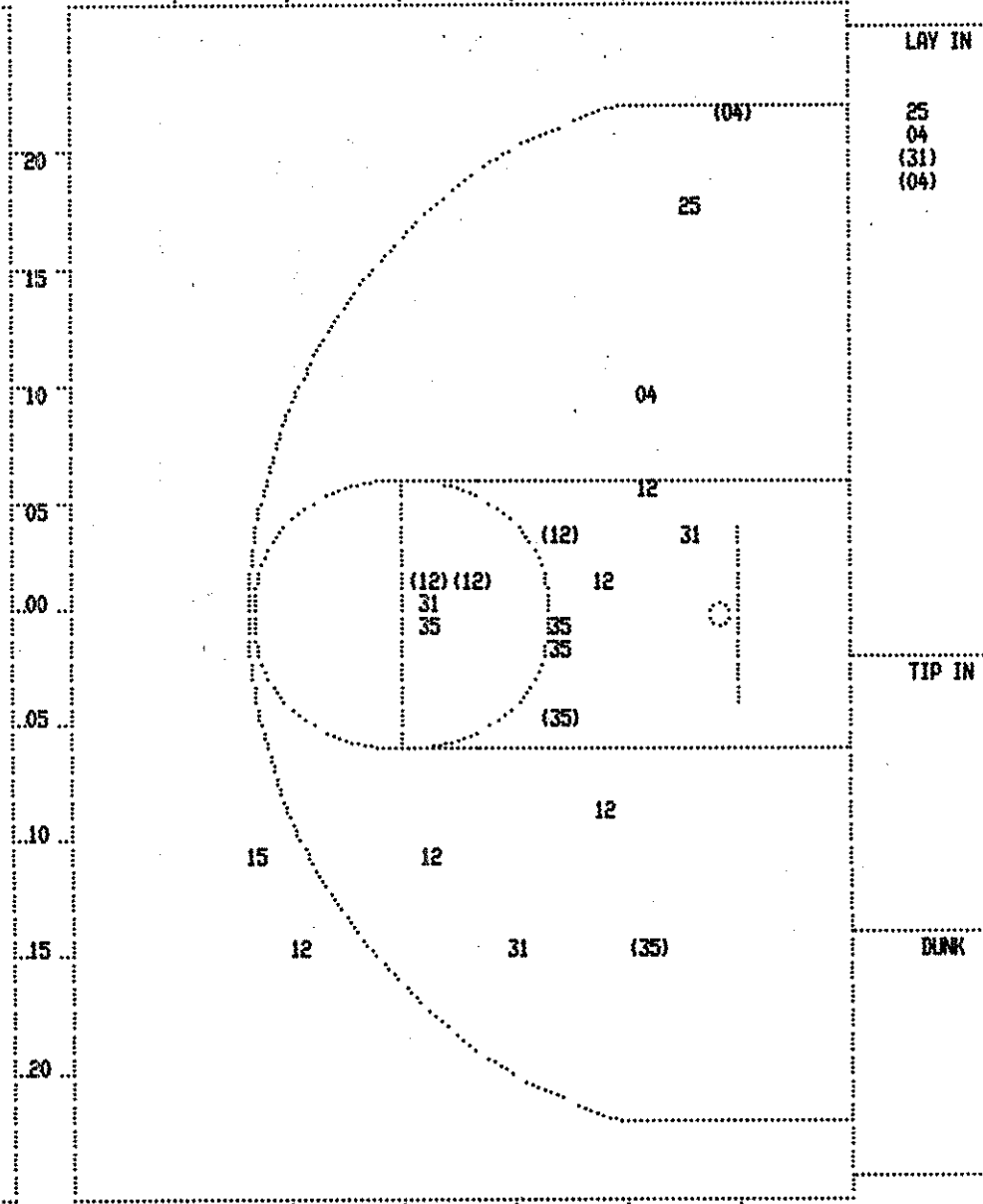
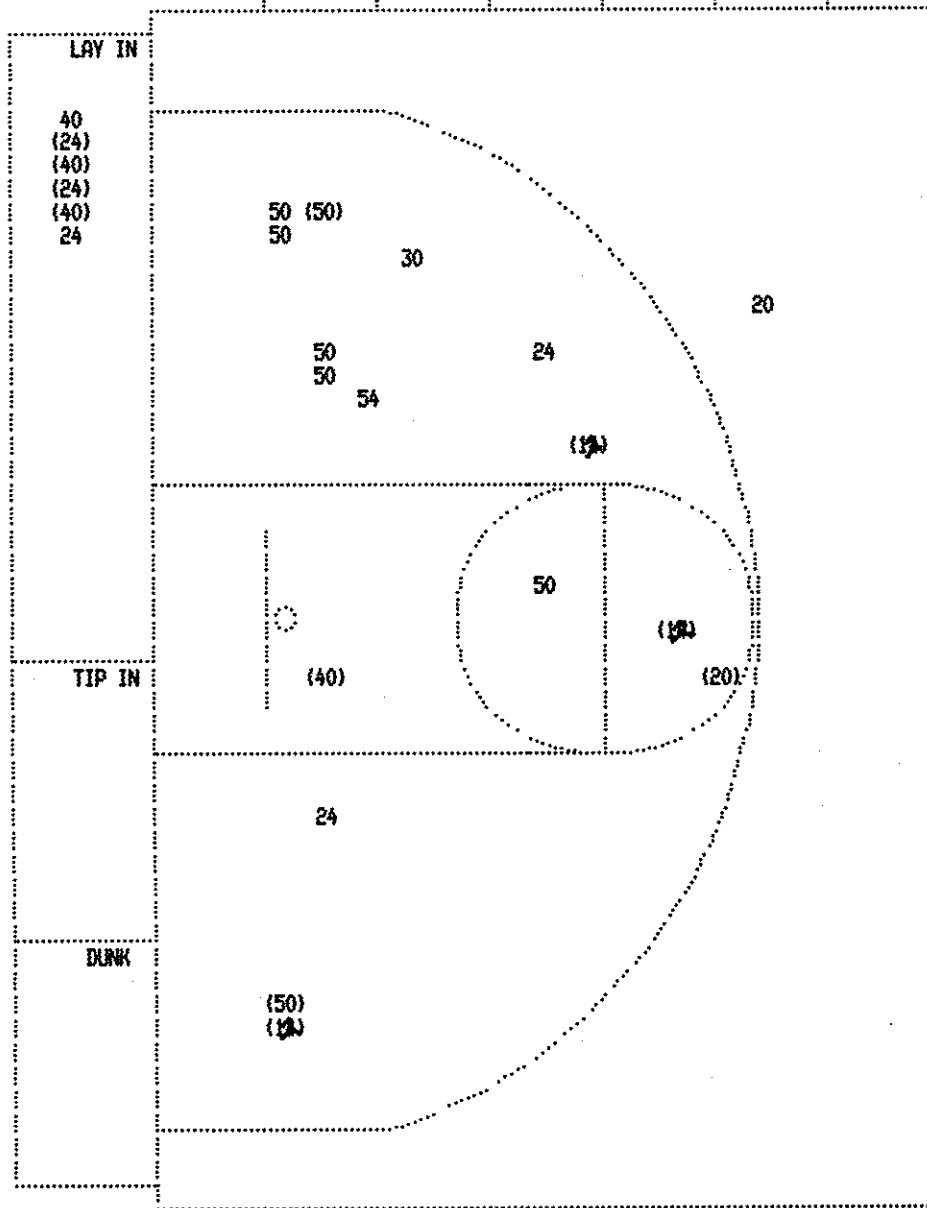
Pulaski County "Lady Maroons" vs Henry Clay "Lady Devils"
2nd Half Play by Play

PAGE : 2

Tip off at 2:30 p.m. on 03/23/88 at State Tourney, Frankfort
Produced by the K.H.S.A.A. Stat Crew with FINAL III**

Player	Team	Henry Clay	Time	Score	Pulaski County	Player	Team
Smith, Dawn, Weissmueller,		D, Walker, Tammy, Barney, Alicon, Bright, Demetria			Morris, Veronica, Smith, Amber, Cox, Angie, Waddle, Dana, Seefeldt, Tari		
3-6	50.0%	14-39 35.8%	14 ft Right Angle Jump shot by Smith, Dawn	4 7:41	*31-22		
			Assist by Barney, Alicon				
			Foul on Walker, Tammy	4 7:30			
			Foul on Smith, Dawn	4 7:24			
				4 7:24	31-23*	Cox, Angie, 2 Free Throws missed 1st made 2nd	5-6 83.3% 7-10 70.0%
			Foul on Bright, Demetria	4 7:19			
				4 7:19	31-24*	Smith, Amber, 1 & Bonus made 1st missed 2nd	1-4 25.0% 8-12 66.6%
				4 7:17		Foul on Morris, Veronica	2 3
4-7	57.1%	15-41 36.5%	16 ft Circle Jump shot by Smith, Dawn	4 6:08	*33-24		
			Assist by Bright, Demetria				
			REB: 27 A: 10 BLK: 2 TO: 9 PF: 7	4 5:42		REB: 14 A: 4 BLK: 0 TO: 10 PF: 3	
			S: 5 FT: 3-3 100% FG: 15-41 36.5%	T I M E - O U T	Pulaski County No. 2	S: 2 FT: 8-12 66.6% FG: 8-26 30.7%	
				4 5:30	33-25*	10 ft Lane Turnaround by Cox, Angie	4-13 30.7% 9-27 33.3%
						Assist by Smith, Amber	3 5
			REB: 27 A: 10 BLK: 2 TO: 9 PF: 7	4 5:20		REB: 14 A: 5 BLK: 0 TO: 10 PF: 3	
			S: 5 FT: 3-3 100% FG: 15-41 36.5%	No. 1 Henry Clay	T I M E - O U T	S: 2 FT: 8-12 66.6% FG: 9-27 33.3%	
				4 4:41		Foul on Morris, Veronica	3 4
5-8	62.5%	16-43 37.2%	Layup Off Fast Break by Walker, Tammy	4 4:14	*35-26		
			Assist by Weissmueller, D				
				4 4:03	35-28*	14 ft Right Side Turnaround by Seefeldt, Tari	3-9 33.3% 10-29 34.4%
				4 3:36		Foul on Morris, Veronica	4 5
2-3	66.6%	4-5 80.0%	Walker, Tammy, 2 Free Throws missed 1st made 2nd	4 3:36	*36-28		
				4 3:24		18 ft Left Base Line Jump shot by Morris, Veronica, missed	1-3 33.3% 10-30 33.3%
D-1	Tot-1	D-1 Tot-29	Rebound by Smith, Dawn	4 3:20			
2-5	40.0%	17-44 38.6%	Driving Layup by Barney, Alicon, made	4 3:10	*38-28		
			Assist by Bright, Demetria				
D-1	Tot-1	D-1 Tot-30	Rebound by TEAM	4 2:52			
				4 2:49	38-31*	3 pt 22 ft Left Base Line Jump shot by Smith, Amber, made	2-3 66.6% 11-31 35.4%
6-9	66.6%	18-45 40.0%	Driving Layup by Walker, Tammy, made	4 2:28	*40-31		
			Assist by Bright, Demetria				
				4 2:14		16 ft Right Side Jump shot by Waddle, Dana, missed	1-3 33.3% 11-32 34.3%
				4 2:13		Rebound by Seefeldt, Tari	0-1 Tot-1 0-1 Tot-16
			Foul on Walker, Tammy	4 2:13			
				4 2:13		Sub In: Withers, Jana Out: Morris, Veronica	
D-1	Tot-1	D-2 Tot-31	Rebound by Walker, Tammy	4 2:13		Seefeldt, Tari, 1 & Bonus missed 1st	0-1 00.0% 8-13 61.5%
				4 2:12			
				4 1:59		Steal by Smith, Amber	1 4
			Alternate Possession Turnover by Bright, Demetria	4 1:59			
			REB: 31 A: 13 BLK: 2 TO: 11 PF: 8	4 1:59		REB: 16 A: 5 BLK: 0 TO: 11 PF: 5	
			S: 6 FT: 4-5 80.0% FG: 18-45 40.0%	No. 2 Henry Clay	T I M E - O U T	S: 4 FT: 8-13 61.5% FG: 11-32 34.3%	
				4 1:54		3 pt 23 ft Right Angle Jump shot by Cox, Angie, missed	4-15 26.6% 11-33 33.3%
				4 1:50		Rebound by Waddle, Dana	0-1 Tot-1 0-2 Tot-17
				4 1:50		4 ft Lane Follow by Waddle, Dana, missed	1-4 25.0% 11-34 32.3%
				4 1:44		Rebound by Waddle, Dana	0-2 Tot-2 0-3 Tot-18
				4 1:44	40-33*	Follow Layup by Waddle, Dana, made	2-5 40.0% 12-35 34.2%
				4 1:35		Steal by Cox, Angie	1 5
				4 1:34			
			Bad Pass by Smith, Dawn	4 1:30	40-35*	Layup Off Fast Break by Smith, Amber, made	3-4 75.0% 13-36 36.1%
				4 1:11		Foul on Smith, Amber	2 6
0-2	00.0%	4-7 57.1%	Barney, Alicon, 2 Free Throws missed both	4 1:11			

SECOND HALF SHOT CHART Produced by the K.H.S.A.A. Stat Crew with FINAL III™



Henry Clay					
Player			Player		Player
24 - Barney, Al	2 / 5	40.0%	24 - Smith, Daw	3 / 3	100.0%
50 - Bright, Dew	2 / 7	28.5%	54 - Hoten, Ang	0 / 1	0.0%
40 - Walker, Ta	3 / 4	75.0%			
20 - Weissmuell	1 / 2	50.0%			
30 - Hughes, Jea	0 / 1	0.0%			
Layups	1-9 Ft	10-15 Ft	Over 15 Ft	3 Pointers	Total
4 / 6	1 / 2	1 / 5	5 / 9	0 / 1	11 / 23
66.7%	50.0%	20.0%	55.6%	0.0%	47.8%

Pulaski County					
Player			Player		Player
25 - Morris, Ver	0 / 2	0.0%	15 - Withers, J	0 / 1	0.0%
31 - Waddle, Da	1 / 4	25.0%			
35 - Seefeldt,	2 / 5	40.0%			
04 - Smith, Amb	2 / 4	50.0%			
12 - Cox, Angie	3 / 8	37.5%			
Layups	1-9 Ft	10-15 Ft	Over 15 Ft	3 Pointers	Total
2 / 4	2 / 7	3 / 6	0 / 3	1 / 4	8 / 24
50.0%	28.6%	50.0%	0.0%	25.0%	33.3%

BOX SCORE: * OFFICIAL FIRST HALF * Date: 03-23-88 Site: State Tourney, Frankfort Attendance:

Team: Pulaski County

NO.	NAME	TOTAL FG		3-POINT		FT	FTA	REB			PF	TP	A	TO	BLK	S	MIN
		FG	FGA	FG	FGA			O	D	T							
25	Morris, Veronica	1	1	0	0	0	0	0	1	1	1	2	1	0	0	0	16
31	Waddle, Dana	1	1	0	0	0	0	0	1	1	0	2	0	1	0	0	16
35	Seefeldt, Tari	1	5	0	0	0	0	1	1	2	2	2	0	0	0	0	16
04	Smith, Amber	1	1	0	0	0	2	1	0	1	1	2	2	3	0	0	16
12	Cox, Angie	2	8	0	1	2	2	1	3	4	1	6	0	3	0	0	16
TEAM		6 / 16		0 / 1		2	4	3	6	9	5	14	3	7	0	0	80
Percentages:		HALF-----		FG		6 / 16	37.5%	3-PT.		0 / 1	0.0%	FT		2 / 4	50.0%		
		Period 1				2 / 6	33.3%			0 / 1	0.0%			2 / 4	50.0%		
		Period 2				4 / 10	40.0%			0 / 0	0.0%			0 / 0	0.0%		

Team: Henry Clay

NO.	NAME	TOTAL FG		3-POINT		FT	FTA	REB			PF	TP	A	TO	BLK	S	MIN
		FG	FGA	FG	FGA			O	D	T							
24	Barney, Alicon	0	1	0	0	0	0	1	2	3	0	0	0	1	0	0	12
50	Bright, Demetria	2	8	0	0	0	0	1	1	2	1	4	1	2	1	0	13
40	Walker, Tammy	3	5	0	0	1	1	4	2	6	2	7	0	1	0	0	11
20	Weissmueller, D	1	4	0	0	0	0	0	0	0	0	2	2	1	0	1	16
30	Hughes, Jeanetta	0	1	0	0	0	0	1	0	1	1	0	1	1	0	0	11
12	Smith, Dawn	1	4	0	1	2	2	1	0	1	0	4	0	1	0	1	11
54	Hoten, Angela	0	0	0	0	0	0	0	1	1	0	0	0	0	0	1	6
TEAM		7 / 23		0 / 1		3	3	8	7	15	4	17	4	7	1	3	80
Percentages:		HALF-----		FG		7 / 23	30.4%	3-PT.		0 / 1	0.0%	FT		3 / 3	100.0%		
		Period 1				4 / 13	30.8%			0 / 1	0.0%			2 / 2	100.0%		
		Period 2				3 / 10	30.0%			0 / 0	0.0%			1 / 1	100.0%		

OFFICIALS: Dan Hatfield, Danny Percell, Alt.-W. Divine

Technical: None

SCORE BY PERIODS

Pulaski County 6 8 = 14
Henry Clay 10 7 = 17

Produced by the K.H.S.A.A. Stat Crew with FINAL III™

BOX SCORE: * OFFICIAL FIRST HALF * Date: 03-23-88 Site: State Tourney, Frankfort Attendance:

Team: Pulaski County

NO.	NAME	TOTAL FG		3-POINT		FT	FTA	REB			PF	TP	A	TO	BLK	S	MIN
		FG	FGA	FG	FGA			O	D	T							
25	Morris, Veronica	1	1	0	0	0	0	0	1	1	1	2	1	0	0	0	16
31	Waddle, Dana	1	1	0	0	0	0	0	1	1	0	2	0	1	0	0	16
35	Seefeldt, Tari	1	5	0	0	0	0	1	1	2	2	2	0	0	0	0	16
04	Smith, Amber	1	1	0	0	0	2	1	0	1	1	2	2	3	0	0	16
12	Cox, Angie	2	8	0	1	2	2	1	3	4	1	6	0	3	0	0	16
TEAM		6 / 16		0 / 1		2	4	3	6	9	5	14	3	7	0	0	80
Percentages:		HALF-----		FG		6 / 16	37.5%	3-PT.		0 / 1	0.0%	FT		2 / 4	50.0%		
		Period 1				2 / 6	33.3%			0 / 1	0.0%			2 / 4	50.0%		
		Period 2				4 / 10	40.0%			0 / 0	0.0%			0 / 0	0.0%		

Team: Henry Clay

NO.	NAME	TOTAL FG		3-POINT		FT	FTA	REB			PF	TP	A	TO	BLK	S	MIN
		FG	FGA	FG	FGA			O	D	T							
24	Barney, Alicon	0	1	0	0	0	0	1	2	3	0	0	0	1	0	0	12
50	Bright, Demetria	2	8	0	0	0	0	1	1	2	1	4	1	2	1	0	13
40	Walker, Tammy	3	5	0	0	1	1	4	2	6	2	7	0	1	0	0	11
20	Weissmueller, D	1	4	0	0	0	0	0	0	0	0	2	2	1	0	1	16
30	Hughes, Jeanetta	0	1	0	0	0	0	1	0	1	1	0	1	1	0	0	11
12	Smith, Dawn	1	4	0	1	2	2	1	0	1	0	4	0	1	0	1	11
54	Hoten, Angela	0	0	0	0	0	0	0	1	1	0	0	0	0	0	1	6
TEAM		7 / 23		0 / 1		3	3	8	7	15	4	17	4	7	1	3	80
Percentages:		HALF-----		FG		7 / 23	30.4%	3-PT.		0 / 1	0.0%	FT		3 / 3	100.0%		
		Period 1				4 / 13	30.8%			0 / 1	0.0%			2 / 2	100.0%		
		Period 2				3 / 10	30.0%			0 / 0	0.0%			1 / 1	100.0%		

OFFICIALS: Dan Hatfield, Danny Percell, Alt.-W. Divine

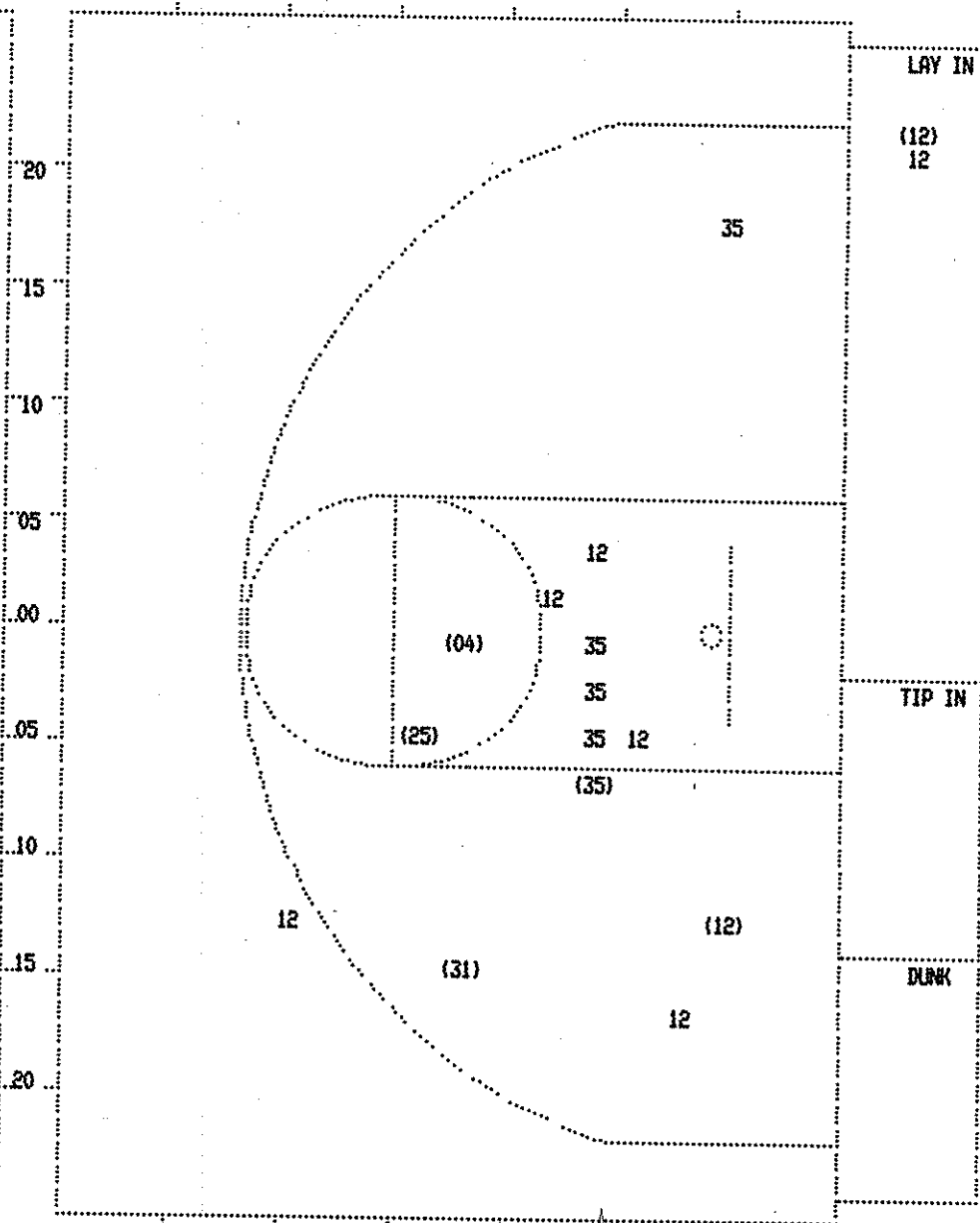
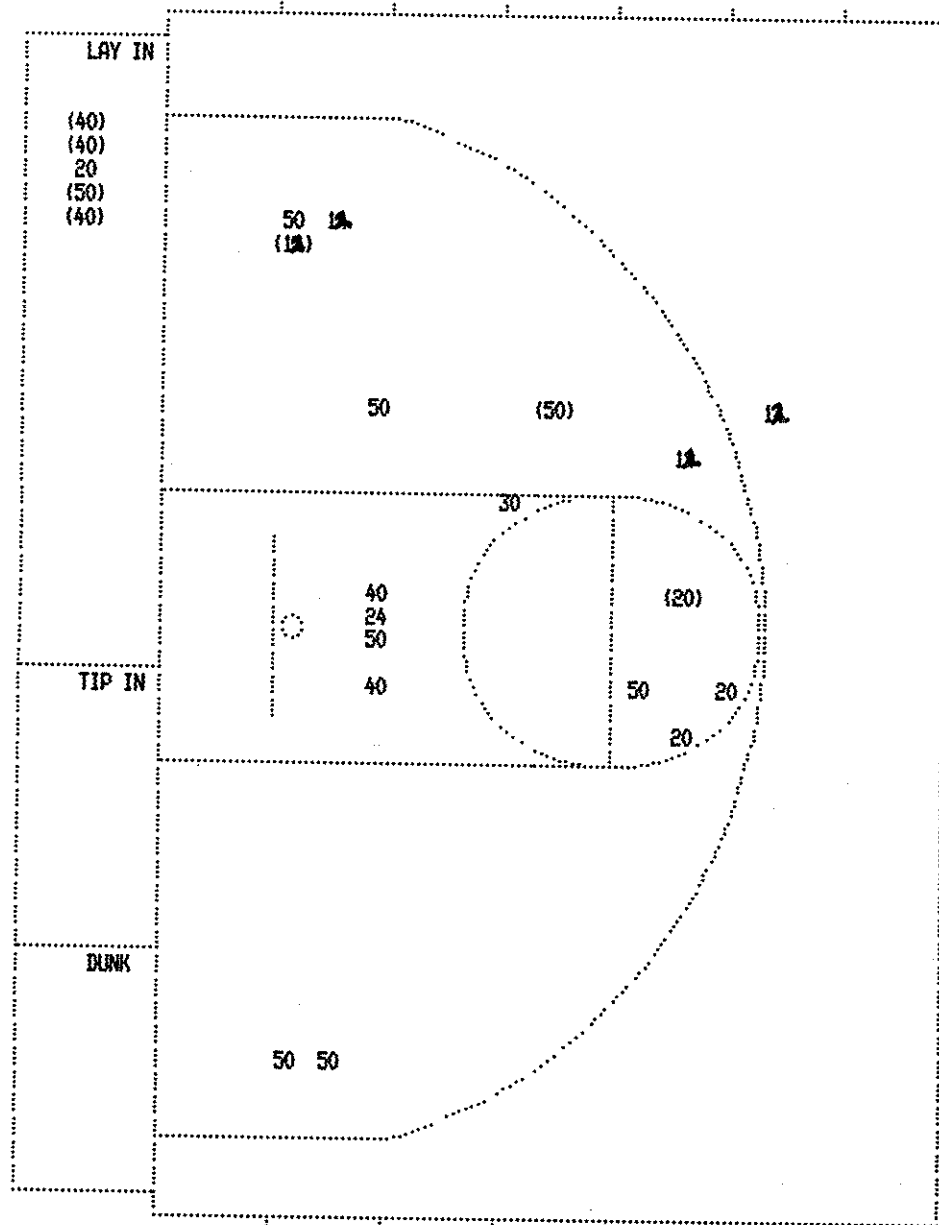
Technical: None

SCORE BY PERIODS

Pulaski County 6 8 = 14
Henry Clay 10 7 = 17

Produced by the K.H.S.A.A. Stat Crew with FINAL III™

FIRST HALF SHOT CHART Produced by the K.H.S.A.A. Stat Crew with FINAL III™



Henry Clay					
Player	1-9 Ft	10-15 Ft	Over 15 Ft	3 Pointers	Total
24 - Barney, Al	0 / 1	0.0%	12 - Smith, Daw	1 / 4	25.0%
50 - Bright, Dew	2 / 8	25.0%			
40 - Walker, Ta	3 / 5	60.0%			
20 - Weissmuell	1 / 4	25.0%			
30 - Hughes, Jea	0 / 1	0.0%			
Layups	1-9 Ft	10-15 Ft	Over 15 Ft	3 Pointers	Total
4 / 5	0 / 4	1 / 4	2 / 9	0 / 1	7 / 23
80.0%	0.0%	25.0%	22.2%	0.0%	30.4%

Pulaski County					
Player	1-9 Ft	10-15 Ft	Over 15 Ft	3 Pointers	Total
25 - Morris, Ver	1 / 1	100.0%			
31 - Waddle, Da	1 / 1	100.0%			
35 - Seefeldt,	1 / 5	20.0%			
04 - Smith, Amb	1 / 1	100.0%			
12 - Cox, Angie	2 / 8	25.0%			
Layups	1-9 Ft	10-15 Ft	Over 15 Ft	3 Pointers	Total
1 / 2	1 / 7	3 / 3	1 / 3	0 / 1	6 / 16
50.0%	14.3%	100.0%	33.3%	0.0%	37.5%